

Mardome Smoke Vent

TB285 Mardome Smoke Vent Datasheet

Product Description

Brett Martin Daylight Systems Mardome Smoke Vents are individual polycarbonate dome rooflights intended for installation on flat roofs of all modern building types to provide natural smoke and heat exhaust ventilation and comfort ventilation.

Mardome Smoke Vents are designed and manufactured under an ISO9001 approved quality system. These products are fully tested and certified in accordance with EN12101-2 : 2003.



Design Features

- Design fully tested and certified in accordance with EN12101-2 : 2003.
- Factory fitted 24V electrical actuator opens up to 140 degrees in less than 60 seconds.
- Provides smoke and comfort ventilation.
- Contemporary low rise profile (dome and pyramid options).
- Constant separation of glazing skins across full width of dome including fixing flange on part L compliant triple skin glazing options. This avoids cold spots and minimises the risk of condensation.
- Options to satisfy requirements for light transmission, and thermal performance.
- Optional accessories include wind deflectors for improved aerodynamic area, and control panel system.
- Suitable for flat roof applications with a pitch of typically 0°-15° – speak to technical for pitches greater than this.

Appearance

Mardome Smoke Vent Rooflights have clean, white interior surfaces with a central or offset internal actuator. The unobtrusive external appearance also complements the surrounding environment. The low profile dome improves the aesthetics and also the clarity of light.

Composition

The outer dome of Mardome Smoke Vent is manufactured from 3mm impact resistant Marlon FSX Longlife polycarbonate sheet which is co-extruded with a UV protective coating to both sides. The inner domes are manufactured from 2mm impact resistant Marlon FSX Longlife polycarbonate sheeting for double and triple skin options. The kerb and hinge frames are manufactured from Lead & Cadmium free un-plasticised PVC rigid multi-wall extruded profile. Internal finish of all framework is gloss white. The 300mm sloped kerb is lined with sheet metal in white finish. The actuators are all zinc plated steel.

The polycarbonate, PVC-U, steel and aluminium which comprise the product can be recycled at the end of useful product life.

Durability

Mardome Smoke Vents are expected to remain fit for purpose in normal industrial conditions for a period of 20 years (with a warranty available providing a 10 year guarantee) i.e. they will not become perforated, lose significant structural integrity, or distort to the extent of losing weather-tightness. The available warranty also guarantees:

- Polycarbonate used in Mardome rooflights against loss of light transmission, discolouration or loss of impact strength for 10 years.
- Electrical actuators (where present), for a period of 1 year (actuators have a design life of at least 10,000 cycles).

Safety Requirements and CDM

Mardome Smoke Vents achieve Class B non-fragility to ACR[M]001 when new and fully installed in accordance with Brett Martin Daylight Systems' installation guides. Foot traffic on rooflights should always be avoided; impacts such as foot traffic or a falling person may cause damage which could necessitate rooflight replacement.

Security

The design of the Mardome Smoke Vent is such that individual fixings are concealed inside security caps. Removal of these caps to gain access to the fixings is extremely difficult. In addition, polycarbonate rooflights have good resistance to impact, making breakage very difficult.

Please refer to BBA Certificate 06/4385, Section 14 for more details.



brettmartin.com

Mardome Smoke Vent

TB285

Mardome Smoke Vent
Datasheet

Fire Ratings

Building Regulations Approved Document B: Fire Safety, Volume 2 - Buildings other than dwellings (2019 edition, amended May 2020) sets out the fire safety rules for buildings other than dwellings, which can be met by achieving specific European class fire ratings to European standard BS EN 13501. Mardome Smoke Vents achieve **Class B-s1,d0** to BS EN 13501: Part 1, and can therefore also be regarded as **B_{ROOF}(t4)** as defined in Approved Document B2 paragraph 14.7. For more information please see TB413.

They do not have a fire resistance classification and are not appropriate for applications which require fire resistance performance to BS476 part 22.

Available Sizes & Options

- Curved dome or a pyramid profile.
- Double or triple skin glazing.
- 100mm vertical direct fix kerb (for mounting to 200mm high structural, insulated builders upstand), or 300mm sloped kerb (for mounting at roof surface level).
- Central actuator, or offset for use as an access hatch.
- Wind Deflectors for an enhanced aerodynamic performance (see table below for Free Area).

| Size | | Smoke Vent on Structural, Insulated Builders Upstand | | | | | Smoke Vent with 300mm Kerb | | | | | Free Area# (m ²) | Current Draw (A) |
|-----------------|---------------|--|--------------------------------|----------------|--------------------------------|----------------|-------------------------------------|------------------------|--------------------------------|-----------------|--------------------------------|------------------------------|------------------|
| | | Roof Opening Area (m ²) | Aerodynamic Free Area* | | | | Roof Opening Area (m ²) | Aerodynamic Free Area* | | | | | |
| | | | Standard | | Wind Deflectors | | | Standard | | Wind Deflectors | | | |
| Smoke Vent (mm) | Daylight (mm) | C _v | A _a /m ² | C _v | A _a /m ² | C _v | A _a /m ² | C _v | A _a /m ² | C _v | A _a /m ² | | |
| 1050 x 1050 | 900 x 900 | 0.81 | 0.48 | 0.39 | 0.61 | 0.49 | 1.10 | 0.44 | 0.49 | 0.62 | 0.68 | 0.72 | 4 |
| 1200 x 1050 | 1050 x 900 | 0.95 | 0.46 | 0.43 | 0.61 | 0.58 | 1.26 | 0.42 | 0.53 | 0.63 | 0.79 | 0.85 | 4 |
| 1200 x 1200 | 1050 x 1050 | 1.10 | 0.47 | 0.52 | 0.61 | 0.67 | 1.44 | 0.44 | 0.63 | 0.62 | 0.90 | 1.01 | 4 |
| 1350 x 1050 | 1200 x 900 | 1.08 | 0.44 | 0.48 | 0.61 | 0.66 | 1.42 | 0.40 | 0.57 | 0.64 | 0.90 | 0.99 | 4 |
| 1350 x 1200 | 1200 x 1050 | 1.26 | 0.45 | 0.57 | 0.61 | 0.77 | 1.62 | 0.42 | 0.68 | 0.63 | 1.02 | 1.16 | 4 |
| 1350 x 1350 | 1200 x 1200 | 1.44 | 0.40 | 0.67 | 0.61 | 0.88 | 1.82 | 0.43 | 0.78 | 0.63 | 1.14 | 1.34 | 6 |
| 1500 x 1050 | 1350 x 900 | 1.22 | 0.42 | 0.51 | 0.61 | 0.74 | 1.58 | 0.39 | 0.61 | 0.64 | 1.01 | 1.12 | 4 |
| 1500 x 1200 | 1350 x 1050 | 1.42 | 0.43 | 0.61 | 0.61 | 0.86 | 1.80 | 0.40 | 0.72 | 0.64 | 1.15 | 1.32 | 4 |
| 1500 x 1350 | 1350 x 1200 | 1.62 | 0.44 | 0.72 | 0.61 | 0.99 | 2.03 | 0.41 | 0.83 | 0.64 | 1.29 | 1.52 | 6 |
| 1500 x 1500 | 1350 x 1350 | 1.82 | 0.45 | 0.83 | 0.60 | 1.09 | 2.25 | 0.42 | 0.95 | 0.63 | 1.42 | 1.72 | 6 |
| 1650 x 1050 | 1500 x 900 | 1.35 | 0.40 | 0.54 | 0.61 | 0.82 | 1.73 | 0.37 | 0.64 | 0.65 | 1.13 | 1.26 | 4 |
| 1650 x 1200 | 1500 x 1050 | 1.58 | 0.41 | 0.65 | 0.61 | 0.96 | 1.98 | 0.38 | 0.75 | 0.65 | 1.28 | 1.48 | 4 |
| 1650 x 1350 | 1500 x 1200 | 1.80 | 0.42 | 0.76 | 0.61 | 1.10 | 2.23 | 0.39 | 0.87 | 0.64 | 1.43 | 1.70 | 6 |
| 1650 x 1500 | 1500 x 1350 | 2.03 | 0.38 | 0.76 | 0.60 | 1.22 | 2.48 | 0.37 | 0.92 | 0.64 | 1.58 | 1.92 | 6 |
| 1650 x 1650 | 1500 x 1500 | 2.25 | 0.44 | 0.99 | 0.60 | 1.35 | 2.72 | 0.42 | 1.14 | 0.64 | 1.73 | 2.14 | 6 |
| 1800 x 1050 | 1650 x 900 | 1.49 | 0.38 | 0.56 | 0.61 | 0.91 | 1.89 | 0.35 | 0.66 | 0.66 | 1.25 | 1.39 | 4 |
| 1800 x 1200 | 1650 x 1050 | 1.73 | 0.39 | 0.68 | 0.61 | 1.06 | 2.16 | 0.36 | 0.78 | 0.66 | 1.42 | 1.64 | 4 |
| 1800 x 1350 | 1650 x 1200 | 1.98 | 0.40 | 0.79 | 0.61 | 1.21 | 2.43 | 0.37 | 0.91 | 0.65 | 1.58 | 1.88 | 6 |
| 1800 x 1500 | 1650 x 1350 | 2.23 | 0.41 | 0.91 | 0.60 | 1.34 | 2.70 | 0.39 | 1.04 | 0.65 | 1.75 | 2.12 | 6 |
| 1800 x 1650 | 1650 x 1500 | 2.48 | 0.42 | 1.04 | 0.60 | 1.49 | 2.97 | 0.40 | 1.18 | 0.64 | 1.91 | 2.37 | 6 |
| 1800 x 1800 | 1650 x 1650 | 2.72 | 0.43 | 1.17 | 0.60 | 1.63 | 3.24 | 0.41 | 1.33 | 0.64 | 2.07 | 2.61 | 6 |

*Aerodynamic Free Area (Aa) of NSHEV in accordance with EN12101-2 : 2003 Annex B, Test Report No. 1368-CPR-T-040/2017-B

Free Area in accordance with Approved Document B (Volume 2), Appendix D5

Accessories

- **Control Panel System:** The EN12101-10:2005 approved and certified Mardome Smoke Vent Control Panel System is available in 5A and 8A options and comes with a built-in comfort switch at the front. See TB286 for more information.
- **Fire Switch:** The Mardome Fire Switch (IP40) is developed to be used together with the Mardome Smoke Vent Control Panel System. Its function is to open the Smoke Vent and activate the alarm. It comes with a breakable glass and is available in orange colour as standard.
- **Fireman's Priority Switch:** The Mardome Fireman's Priority Switch (IP40) is developed to be used together with the Mardome Smoke Vent Control Panel System. Its function is to open/close the Smoke Vent without influencing the alarm situation. It comes with a breakable glass.
- **Smoke Detector:** The Mardome Smoke Detector allows early fire detection with a visual 'release' display. It is available in white as standard.

Please contact Brett Martin Daylight Systems to discuss options.



brettmartin.com

Mardome Smoke Vent

TB285 Mardome Smoke Vent Datasheet

Standard Glazing Values

Mardome Smoke Vents are available with a selection of glazing tint options depending on the required level of light transmission.

| Glazing Performance | | | | | | | |
|---------------------|--------------------------------|--------------------|-------------|---------------------|-------------|-------------------------|-------------|
| Tint | Light Effect | Light Transmission | | Shading Coefficient | | Transmittance (G-Value) | |
| | | Double Skin | Triple Skin | Double Skin | Triple Skin | Double Skin | Triple Skin |
| Clear | High Visibility | 85% | 78% | 0.84 | 0.76 | 0.73 | 0.66 |
| Opal | Diffused light & Solar Control | 35% | 32% | 0.38 | 0.34 | 0.33 | 0.30 |
| Patterned | Privacy | 78% | 72% | | | | |

Thermal Performance

The thermal transmittance of Mardome Rooflights is measured by the Guarded Hot Box method according to BS EN ISO 12567-2: 2005. The performance is declared as the U_g -value (defined in accordance with NARM NTD2). This performance, and the centre pane U -value of the glazing system, is shown in the table below.

Part L Building Regulations require a U -value of at least $2.2W/m^2K$: Brett Martin Daylight Systems recommend the use of at least triple skin rooflights in all applications.

| Thermal Performance | | |
|---------------------------|-------------------------------------|---------------------------|
| Rooflight Variant | Centre Pane U -Value (W/m^2K) | U_d -Value (W/m^2K) |
| Double Skin Polycarbonate | 2.7 | 1.63 - 2.38 |
| Triple Skin Polycarbonate | 1.8 | 1.28 - 1.65 |

* U_d value varies by size and specific configuration

Mardome Smoke Vent (triple skin) is designed for optimal thermal performance and resistance to condensation. This provides full insulation across the whole width of the rooflight (including the fixing flange), eliminating any cold spots associated with traditional methods of dome rooflight construction and giving a much higher f-factor. The elimination of cold spots and the highly insulated frame means that these areas are even more resistant to condensation than the main areas of glazing, where performance is governed by U -value. See BBA certificate 06/4385 section 8 "Condensation risk" for further details.

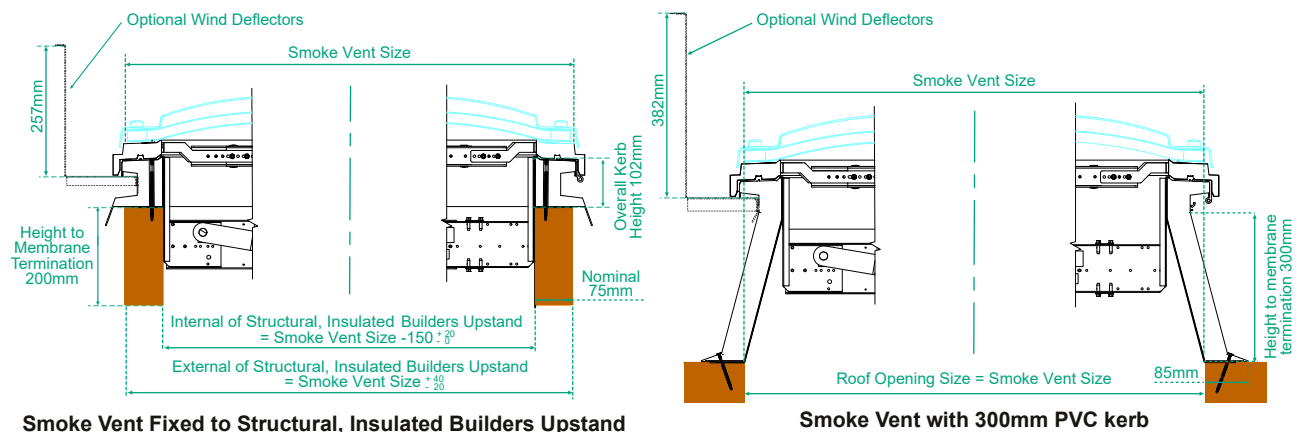
Acoustic Performance

Mardome Rooflights are independently tested for Rain Noise Penetration to BS EN 140-18: 2006.

| Acoustic Performance | | |
|------------------------------------|------------------------------|---------------------------|
| Rooflight Variant | Rain Noise Penetration (LiA) | Airborne Sound Index (Rw) |
| Standard Double Skin Polycarbonate | | 20 dB |
| Standard Triple Skin Polycarbonate | 61.8 dB | 22 dB |

Product Dimensions

Where Mardome Smoke Vents are required to fit onto a structural, insulated builders upstand, the minimum height of the structural, insulated upstand must be 200mm, to meet the requirements of EN12101-2. External dimensions of builders upstand to match nominal size of Smoke Vent. Internal and external upstand dimensions are critical, see diagram below.



Mardome Smoke Vent

TB285 Mardome Smoke Vent Datasheet

Product Dimensions Cont.

Mardome Smoke Vents have differing heights and weights. As this value varies with rooflight size and specification, a range of values are quoted in the Product Overall Height & Weight table. For more details contact Brett Martin Daylight Systems.

| Product Overall Height & Weight | | | |
|--|--------------|-------------|---------------|
| Rooflight Variant | Nominal Size | Height (mm) | Weight (kg) |
| Smoke Vent on Structural, Insulaed Builder's Upstand | 1050 x 1050 | 248 (321) | 46.9 (50.9) |
| | 1800 x 1800 | 351 (351) | 82.3 (86.3) |
| Smoke Vent with 300mm Kerb | 1050 x 1050 | 509 (710) | 66.6 (74.7) |
| | 1800 x 1800 | 612 (710) | 115.6 (123.7) |

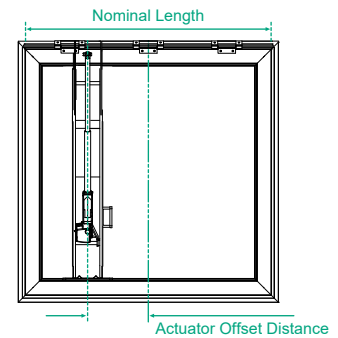
Weight based on triple skin.
Values with wind deflectors are given in brackets.

Offset Actuator Dimensions

When specified with an offset actuator for access, offset distance varies with size. The offset distances are shown in the Offset Actuator Offset Distance table.

| Offset Actuator Offset Distance | |
|---------------------------------|-------------------------------|
| Nominal Smoke Vent Length (mm) | Actuator Offset Distance (mm) |
| 1050 | 275 |
| 1200 | 300 |
| 1350 | 225 |
| 1500 | 150 |
| 1650 | 75 |
| 1800 | 0* |

* Units of length 1800 are not available with offset actuator. The space either side of the centrally mounted actuator is suitable for access



EN12101-2 : 2003 Performance

Mardome Smoke Vents have been independently tested to show that when correctly fitted in accordance with our instructions (see TB 286), they will perform in accordance with EN12101-2 : 2003 as shown in Performance Criteria Table.

Please refer to Declaration of Performance CE-SMV-001 for more details.

Certificate number - 0086 CPR 745300 (UK CA)
- 2797 CPR 745301 (CE)

| Performance Criteria | | |
|------------------------------|------------------------------|------------------------------------|
| Essential Characteristic | Performance / Classification | Harmonised European Standard (hEN) |
| Aerodynamic free area (Aa) | See details on page 2 | EN12101-2 : 2003 Annex B |
| Reliability | Re 1000 | EN12101-2 : 2003 Annex C |
| Snow Load | SL 500 | EN12101-2 : 2003 Annex D |
| Low ambient temperature | T (-15) | EN12101-2 : 2003 Annex E |
| Wind Load (Central Actuator) | WL 1500 | EN12101-2 : 2003 Annex F |
| Wind Load (Offset Actuator) | WL 1000 | EN12101-2 : 2003 Annex F |
| Heat Exposure | B 300 | EN12101-2 : 2003 Annex G |
| Reaction to Fire | F | EN12101-2 : 2003 7.5.2.1 |

Installation, Handling, Maintenance & Storage

Full installation details, maintenance and product care details, can be found in the relevant Technical Bulletins.

| Technical Bulletins | |
|---------------------|---|
| Code | Description |
| TB203 | Polycarbonate Dome: Product care before & after installation |
| TB286 | Installation Mardome Smoke Vent |
| COSHH12 | COSHH Data Sheet for Dome Rooflights - Product Safety and Handling Data Sheet |